



Rialtas na hÉireann
Government of Ireland

www.seai.ie

Community Grants Scheme – State Aids



January 2023

General Block Exemption Regulation, Article 36, 38,38a and 41, Regulation (EU) No 651/2014 of 17 June 2014 declaring certain categories of aid compatible with the internal market in application of Articles 107 and 108 of the Treaty (OJ L 187, 26.6.2014, p. 1–78)

All contracts issued in 2024 must comply with these new requirements (contracts issued before 2024 are not impacted, contracts approved in 2023 but issued in 2024 are subject to the old rules)

Community Grants Scheme

Community projects

Building Fabric

EVs

Counterfactual

Community Grants Not for profit



No Change to 50% Funding- no economic activity onsite

They are exempt from State Aids

If there is an economic activity onsite, 30% max grant funding, counterfactual applies and BER uplift.

Building Fabric



Building Fabric

- Solar grant aided at 20%
- Single fabric measures, must support a 10% uplift of the BER (Solar not included) and will be grant-aided at 25%
- Multiple fabric measures, must support a 20% uplift of the BER (Solar not included) and will be granted-aided at 30%
- There will be a pre-BER and post-BER requirement to demonstrate the uplift
- If a project has a heat pump installation which contributes to the heating of the building the project does not require a BER.

EV's



EV chargers

- EV chargers will be grant-aided at 20%
- There are no credits for EV Chargers
- These need to be removed at application

Counterfactual



Renewables



Counterfactual does not apply if adding renewables as a single measure – 30% grant awarded

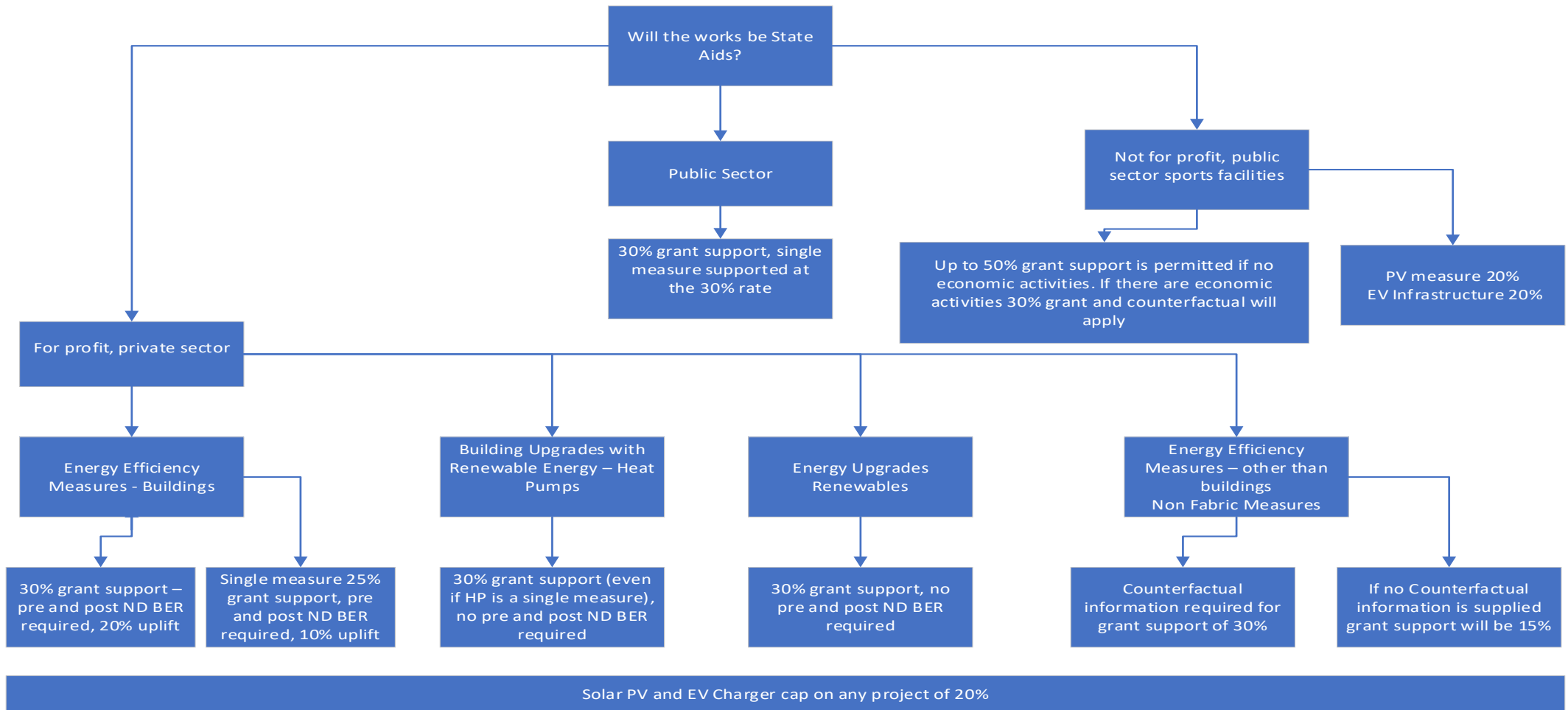
Counterfactual

Counterfactual applies to all non-fabric works or where a measure proposed does not affect the BER rating of the building.

- Speed drives
- Water pumps
- Refrigeration
- Ventilation (possible)
- Cooling (possible)
- Drying equipment
- AHU



Decision Tree



Counterfactual Information Required

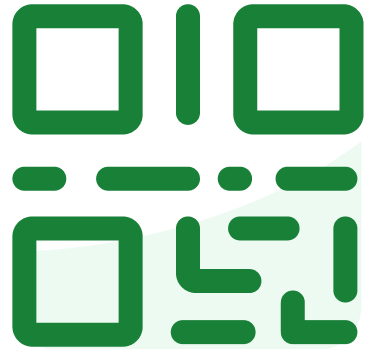
Counterfactual information is required, below are the three options

- we require the maintenance invoice or contract for the upkeep of the existing equipment
- The price of the basic model versus the model you are installing, the difference between the prices is what would be grant-funded
- If no counterfactual information can be obtained the grant funding rate will be at 15%

NPV Calculator

| ND | | | Rate 5% | 5% | | | | |
|----|---------|----|---------|------------------|---------------------------------------|-------------------|--|--|
| | Year 0 | 0 | 70000 | 70,000.00 | | Application value | | |
| | Year 1 | 1 | 1000 | - 952.38 | | | | |
| | Year 2 | 2 | 1000 | - 907.03 | | | | |
| | Year 3 | 3 | 1000 | - 863.84 | | | | |
| | Year 4 | 4 | 1000 | - 822.70 | | | | |
| | Year 5 | 5 | 1000 | - 783.53 | | | | |
| | Year 6 | 6 | 1000 | - 746.22 | | | | |
| | Year 7 | 7 | 1000 | - 710.68 | | | | |
| | Year 8 | 8 | 1000 | - 676.84 | | | | |
| | Year 9 | 9 | 1000 | - 644.61 | | | | |
| | Year 10 | 10 | 1000 | - 613.91 | | | | |
| | Year 11 | 11 | 1000 | - 584.68 | | | | |
| | Year 12 | 12 | 1000 | - 556.84 | | | | |
| | Year 13 | 13 | 1000 | - 530.32 | | | | |
| | Year 14 | 14 | 1000 | - 505.07 | | | | |
| | Year 15 | 15 | 1000 | - 481.02 | | | | |
| | | | | 59,620.34 | Post Counterfactual Correction | | | |

slido



**Join at [slido.com](https://www.slido.com)
#3696368**

① Start presenting to display the joining instructions on this slide.

slido



Does Counterfactual apply to refrigeration?

① Start presenting to display the poll results on this slide.

slido



Does Counterfactual apply to AHU in a Swimming Pool?

① Start presenting to display the poll results on this slide.

slido



**Counterfactual applies to air curtains
and refrigeration doors?**

① Start presenting to display the poll results on this slide.

slido



Does counterfactual apply to external wall insulation on an office building?

① Start presenting to display the poll results on this slide.

slido



Does Counterfactual apply to pitch lighting for a soccer pitch with economic activities on site?

① Start presenting to display the poll results on this slide.

slido



**Heating controls are subject to BER
Uplift requirements?**

① Start presenting to display the poll results on this slide.

slido



If not providing counterfactual information how much is the grant rate

① Start presenting to display the poll results on this slide.

slido



If you have only one counterfactual measure on your application and you have provided the counterfactual information, what is the grant rate?

① Start presenting to display the poll results on this slide.

slido



Do we need to supply a BER if there is a heat pump being installed to heat the building?

① Start presenting to display the poll results on this slide.

slido



EV Credits are no longer added to the workbook at application stage

① Start presenting to display the poll results on this slide.

Thank you for listening

